



The National Archives

Who Killed the Archives?

An Open and Shut Case...

Andrew Payne

Head of Education & Outreach
The National Archives

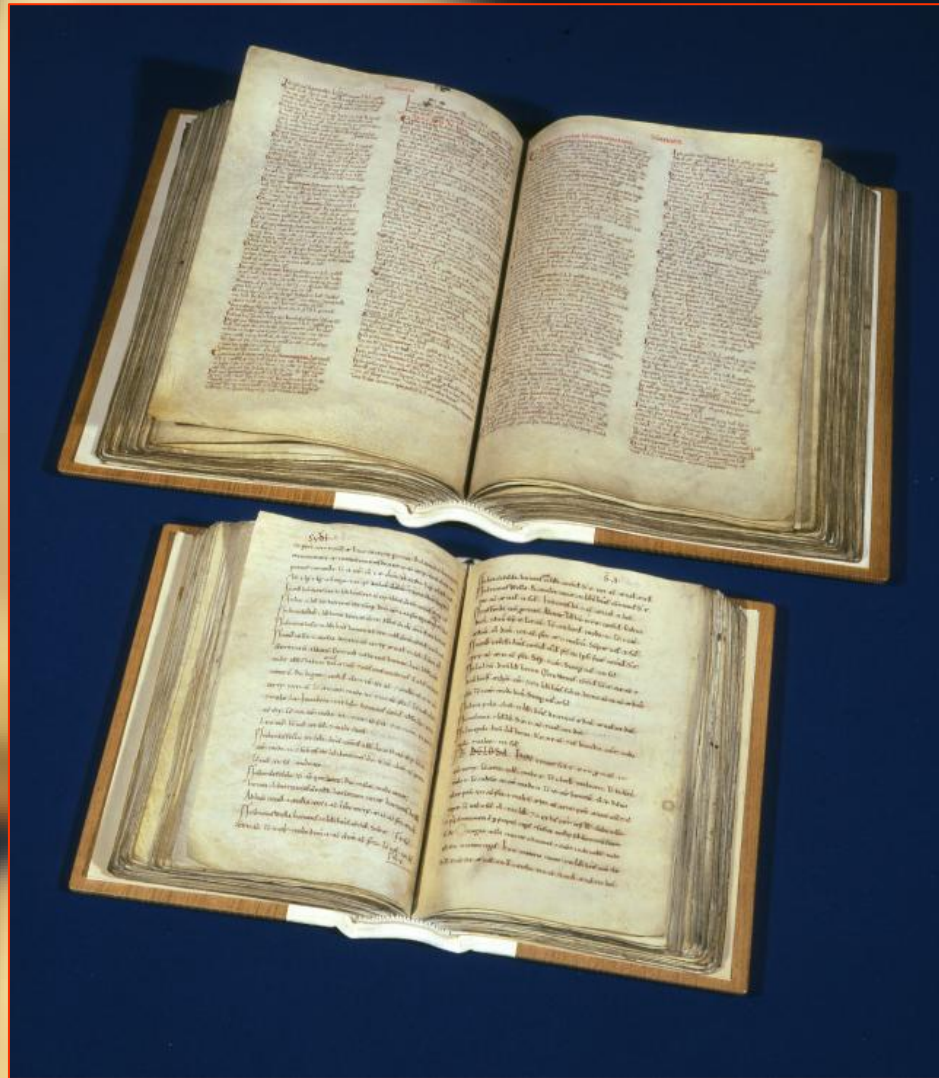
A large flock of sheep is grazing in a lush green field. The sheep are scattered across the field, some facing the camera and others with their backs to it. The field is bordered by a low stone wall in the distance, and there are trees and a line of houses visible on the horizon under a grey, overcast sky. The text "How do you fit a field of sheep in a glass case?" is overlaid in large, bold, yellow letters with a black outline.

**How do you fit a field
of sheep in a glass
case?**

Turn them into Domesday Book



Domesday - 1086





What's on

[Home](#) [Events](#) [Exhibitions](#) [Tours](#) [Schools and colleges](#) [Business](#) [Priority booking](#)

EXHIBITION

Anglo-Saxon Kingdoms: Art, Word, War

Open until Tue 19 Feb 2019



[Book now](#)

[Members go free](#)

Tel: +44 (0)1937 546546

Email: boxoffice@bl.uk

Full Price: £16.00

Member: £16.00

Other concessions available

People love History

“74 out of 100 adults visited a museum, gallery or historic location”

‘Taking Part’
DCMS Report 2016


Department
for Culture
Media & Sport


TNS

TNS BMRB



Taking Part

Findings from the longitudinal survey waves 1 to 3

April 2016

TNS BMRB: Peter Matthews, David Xu, Marta Mafuciak, Gillian Prior



 SPORT
ENGLAND

 ARTS COUNCIL
ENGLAND

 Historic England

1

But archives have a problem...

“3 out of 100
adults
visited an
archive”

‘Taking Part’
DCMS Report 2016



Do museums offer a solution?

“53 out of 100 adults visited a museum”

‘Taking Part’
DCMS Report 2016


Department
for Culture
Media & Sport


TNS

TNS BMRB



Taking Part

Findings from the longitudinal survey waves 1 to 3

April 2016

TNS BMRB: Peter Matthews, David Xu, Marta Mafuciak, Gillian Prior



 SPORT
ENGLAND

 ARTS COUNCIL
ENGLAND

 Historic England

1

Is this REALLY the solution?



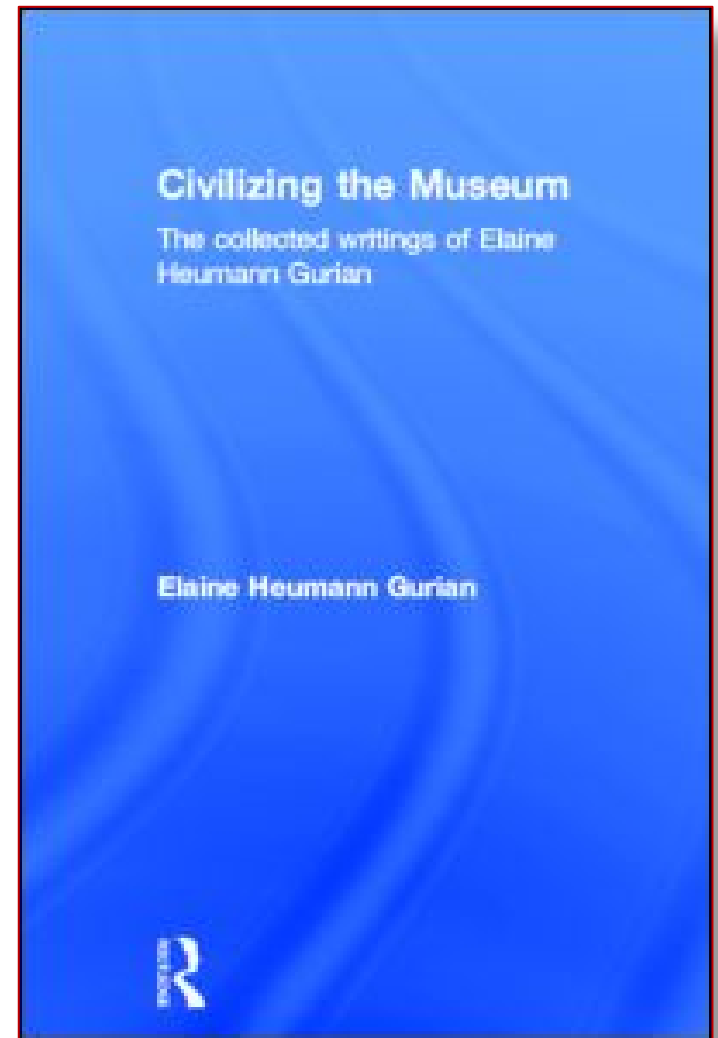
Engagement means more than being “Magic”



The Essential Museum

“If satisfying the user’s internalized questions became the main mission of the museum, it might then become ‘essential’.”

Elaine Heumann Gurian
The Essential Museum
2006



Archives need to be used to be useful!



Archives offer a unique experience



Archives are NOT museums



Archives Inspire – Our Corporate Strategy



ARCHIVES INSPIRE

2015-19



Over the next four years we will think and organise ourselves differently, to meet the needs of each of our major audiences and to face our biggest challenge – digital.

We will change the way you think about archives.



[Read full plan \(PDF\)](#)

[Government](#)

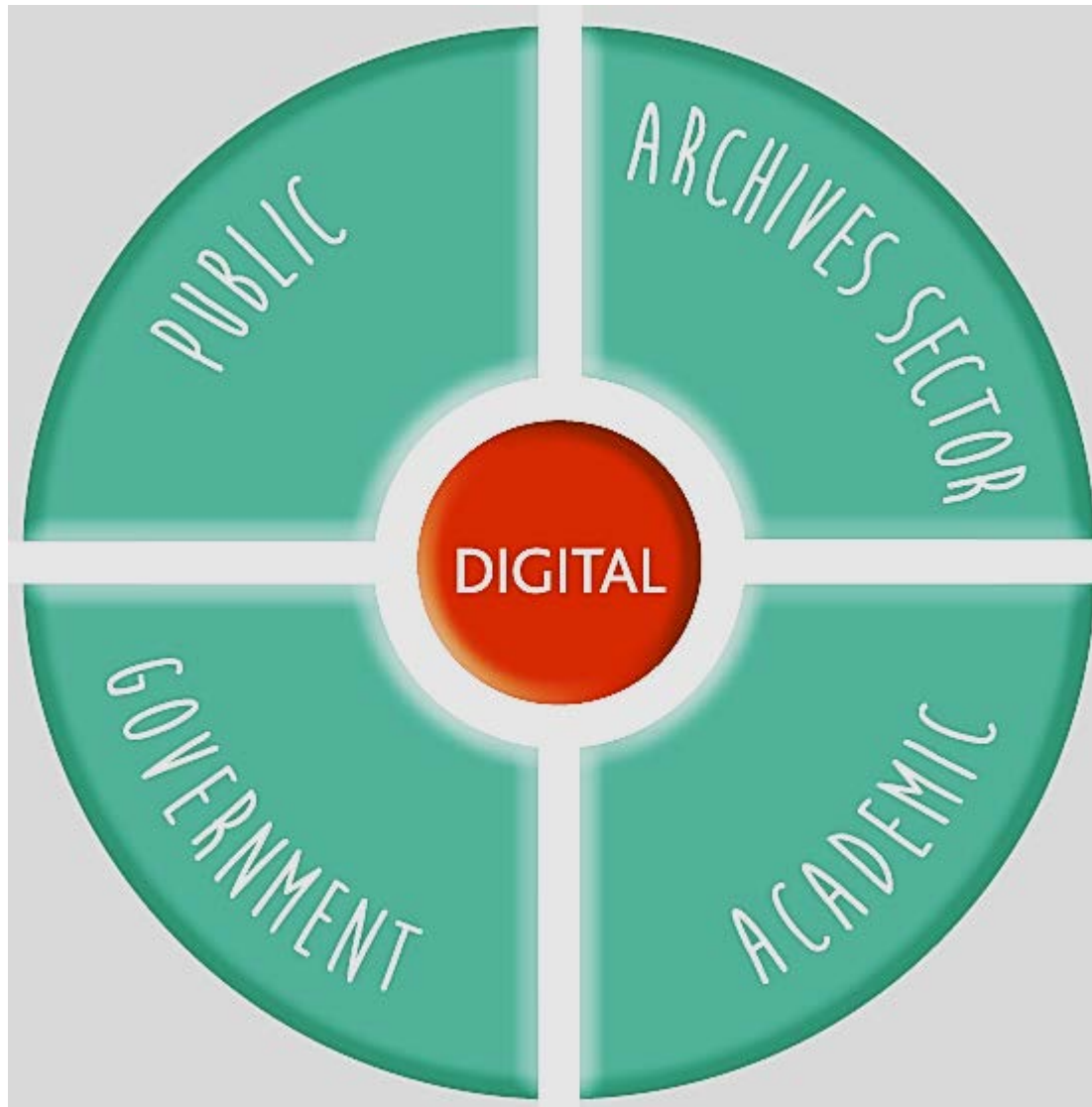
[Public](#)

[Archives sector](#)

[Research](#)

[Digital](#)

Organising Ourselves To Meet Our Audiences



Archives Unlocked – Our Sector Strategy

 The National Archives

ARCHIVES
UNLOCKED
RELEASING
THE POTENTIAL

OGL

© Crown copyright 2017

This publication is licensed under the terms of the Open Government Licence v3.0 except where otherwise stated. To view this licence, visit nationalarchives.gov.uk/doc/open-government-licence/version/3 or write to the Policy Team, The National Archives, Kew, London TW9 4DU, or email: psa@nationalarchives.gsi.gov.uk

Where we have identified any third party copyright information you will need to obtain permission from the copyright holders concerned.

This publication is also available on our website at www.nationalarchives.gov.uk/archives-sector

Any enquiries regarding this publication should be sent to us at asd@nationalarchives.gsi.gov.uk

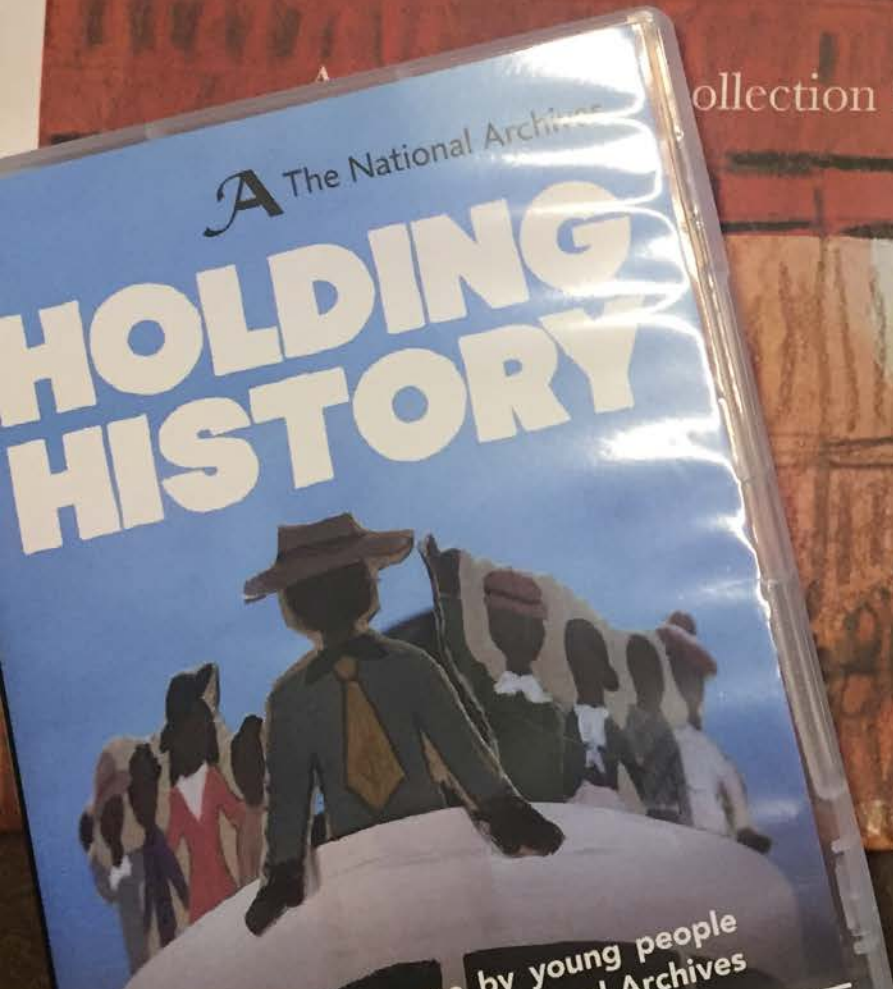
Developed with the support of Activist Group.



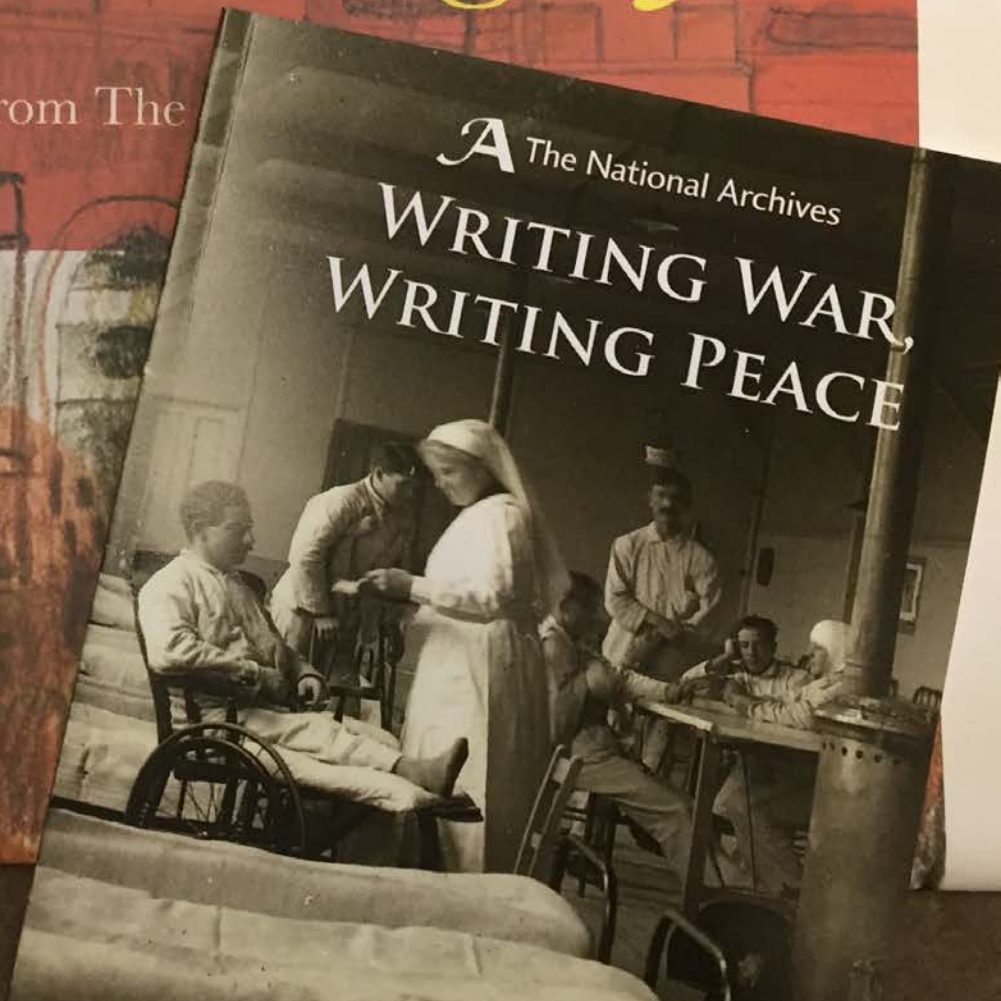
Cover images: Southbank Centre Archive Studio © Dirk Lindner | © John Seax, Museum Games Ltd | The National Archives, cat ref BT 52/143 (22174)

Developing Creative Responses

Armistice & Legacy



collection from The



Family Learning Events



Discovery
Corner

Timothy
PARIS
SAINT-GERMAIN

AKHUC
www.akhuc.com

Kids Takeover Day November 2018



Transforming the physical space...



...to enable a new approach to events





**Recreating The Caravan Club
in partnership with The National Trust**



AFTER THE DAY'S ROUTINE SPEND YOUR EVENING AT

● the caravan ●

81 ENDELL ST.

ENTRANCE IN COURT

(Corner of Shaftesbury Avenue, facing
Princes Theatre)

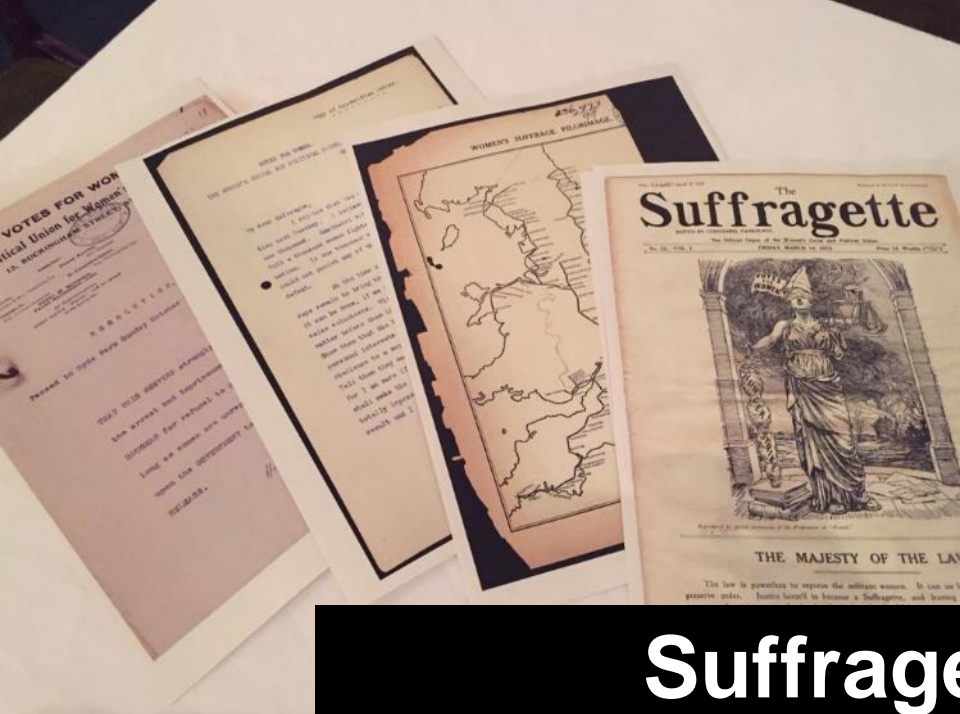
Phone: Temple Bar 7665

*London's Greatest Bohemian Rendezvous
said to be the most unconventional spot in town*

ALL NIGHT GAIETY

Dancing to Charlie

**PERIODICAL NIGHT TRIPS TO THE GREAT OPEN
SPACES, INCLUDING THE ACE OF SPADES, ETC.**



Suffragette City Recreating The Suffragette HQ



A “Hands On” Approach to Exhibitions

"I have never heard, in all my professional experiences, anything so agonising..."

Quaker Friends, 20th February 1813

"[She] led the police on a merry dance up and down the country."

The Sunday Times, 10 May 1992

SURVEILLANCE

THE ART

"The Self"

THE ART

THE ART





Community Outreach



Can archives go beyond engagement?

Can Archives Create Wellbeing?

The relationship between arts engagement and health is important and needs to be understood.

‘Creative Health: The Arts for Health and Wellbeing’
UK Parliament Inquiry Report
July 2017



Wellbeing... developing a definition

“...a state of being in alignment (body, mind, and spirit).”

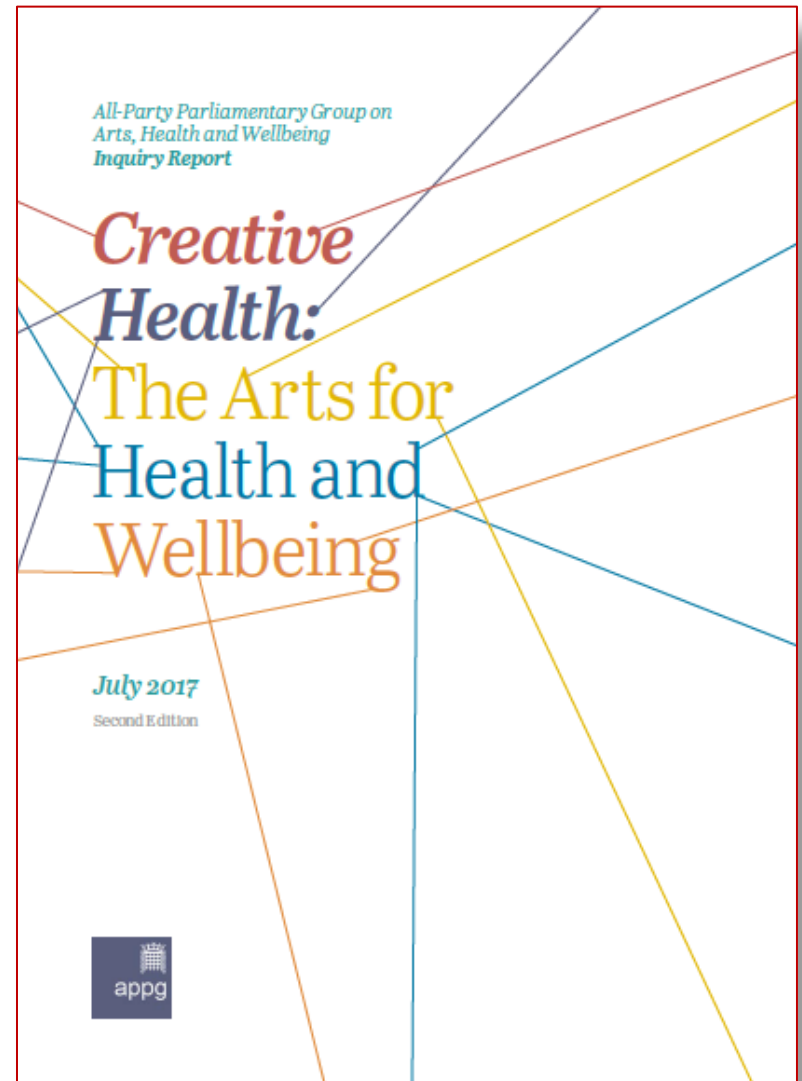


Dr. Mary Jo Kreitzer,
Director of the Center for Spirituality & Healing
University of Minnesota.

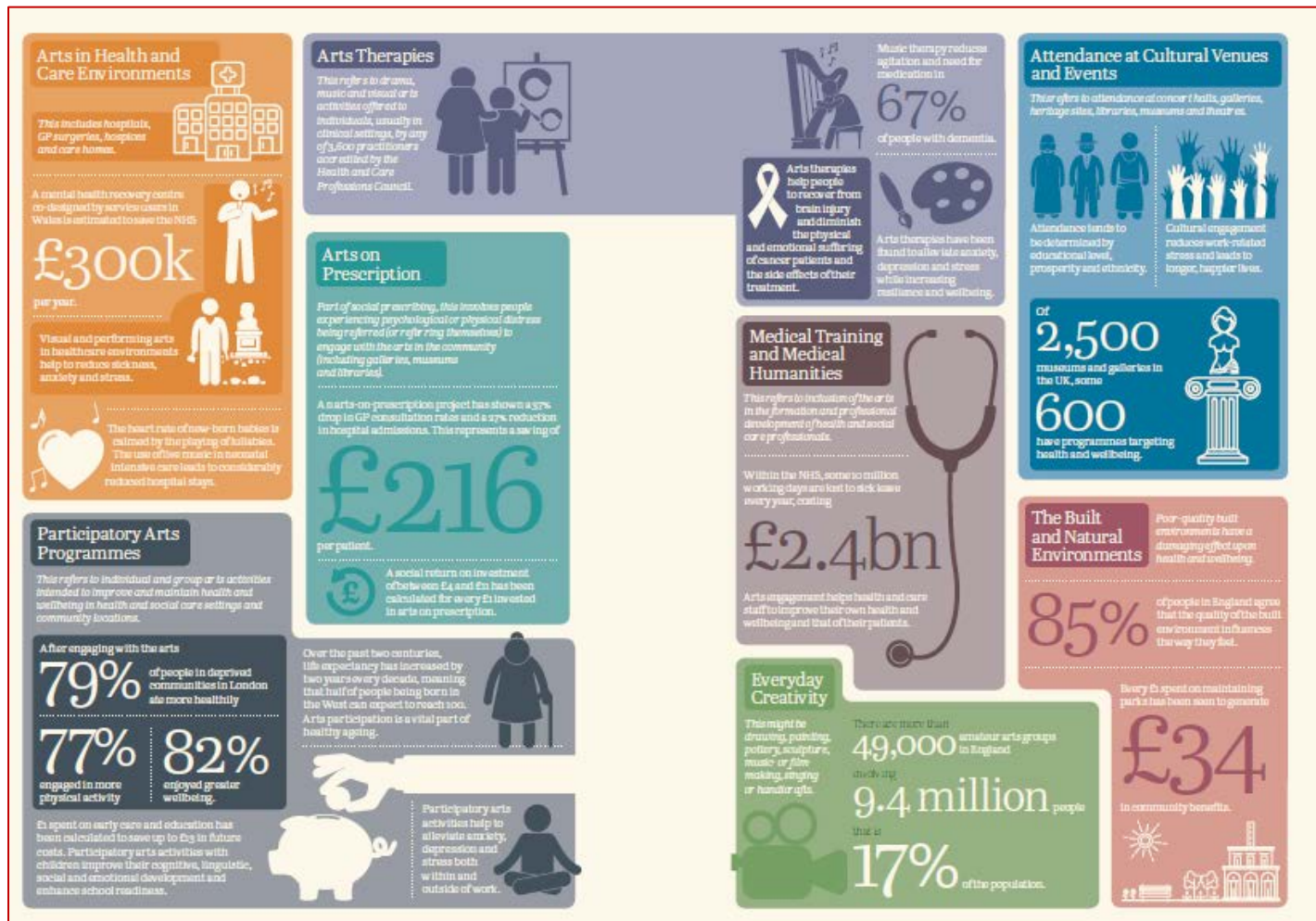
Why does Wellbeing Matter?

People with a low level of wellbeing function far less well and have poorer health and life expectancy.

‘Creative Health: The Arts for Health and Wellbeing’
UK Parliament Inquiry Report
July 2017



The Power of Arts & Culture for Wellbeing



‘Creative Health’ 2017

Why does Wellbeing Matter?

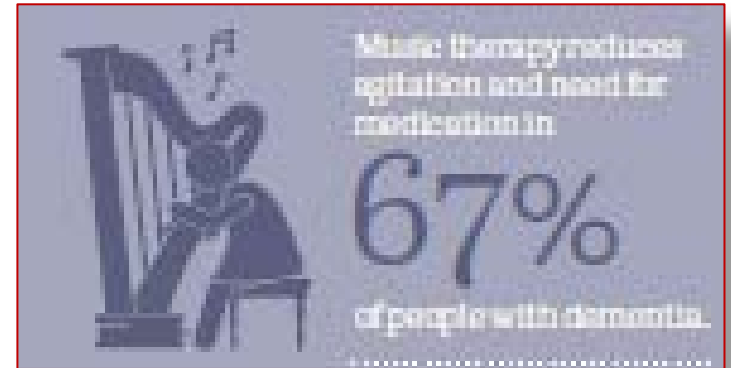
Arts on prescription project reduced visits to GP (doctor) by 37% and hospital admissions by 27% (£216 per patient)

‘Creative Health: The Arts for Health and Wellbeing’
UK Parliament Inquiry Report
July 2017



Why does Wellbeing Matter?

Music therapy
reduces the agitation
and need for
medication in 67% of
dementia patients



‘Creative Health: The Arts for Health
and Wellbeing’
UK Parliament Inquiry Report
July 2017

Why does Wellbeing Matter?

Participants in arts & cultural projects

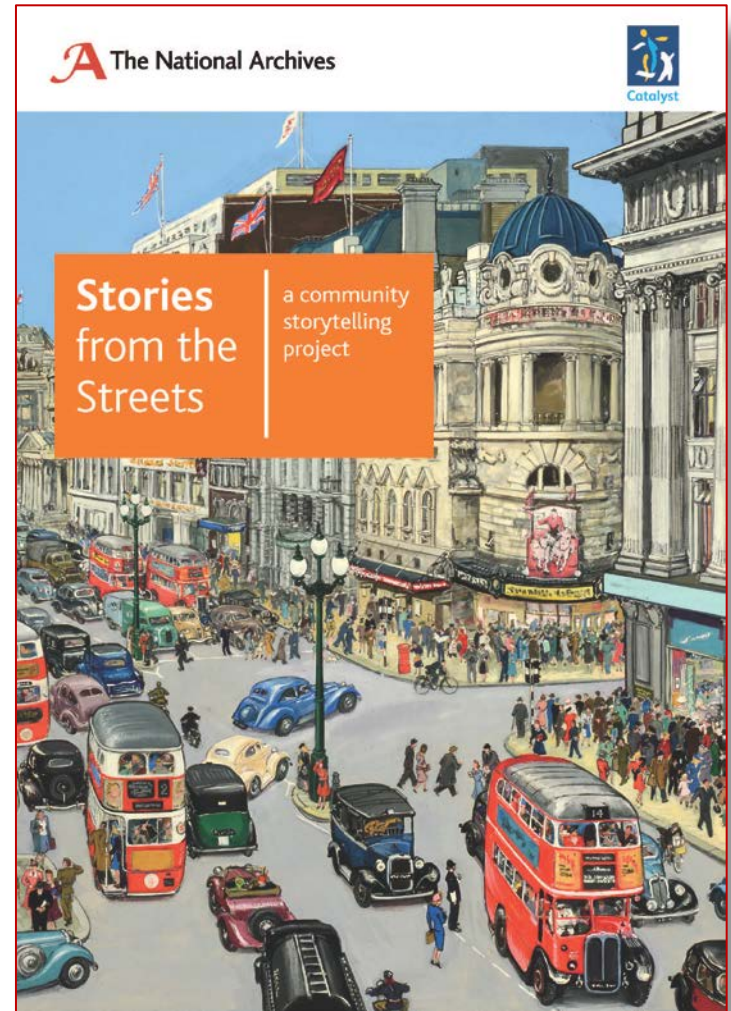
- 79% ate more healthily
- 77% more physical activity
- 82% greater wellbeing

‘Creative Health: The Arts for Health
and Wellbeing’
UK Parliament Inquiry Report
July 2017



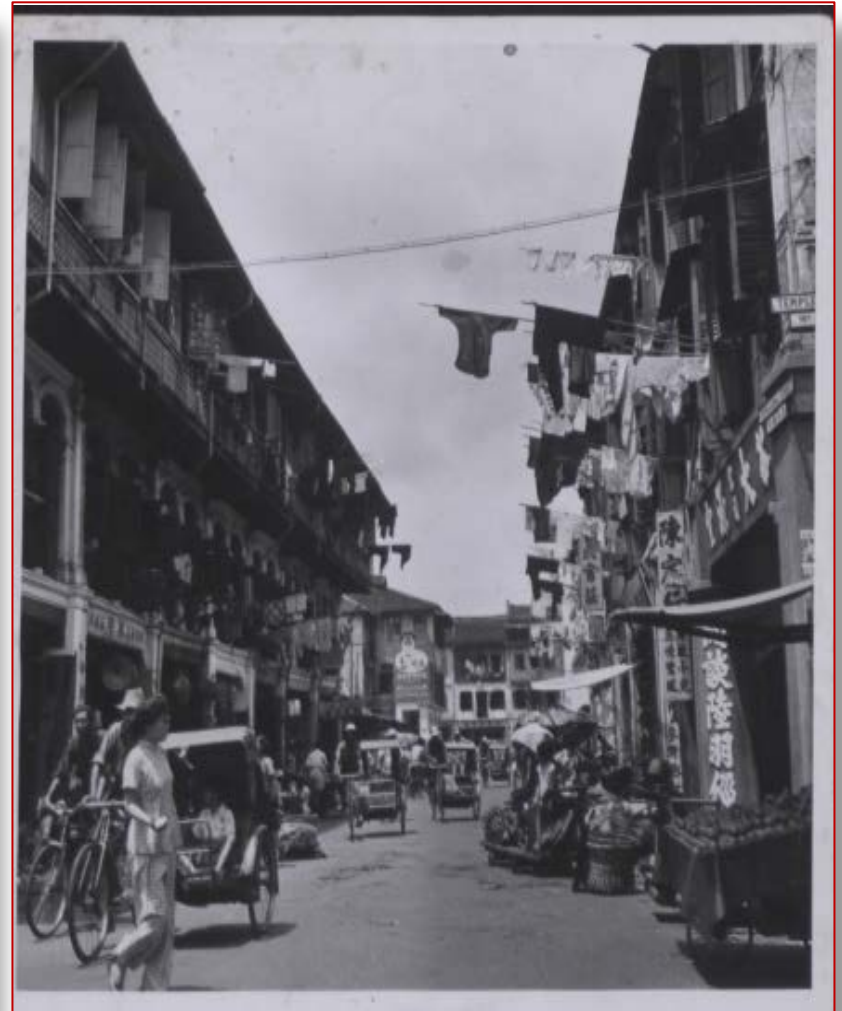
Stories from the Street – Inspiring Reminiscence

- Community story telling project
- 50 participants
- 19 countries
- 3 groups
- Mental ill-health, physical & sensory disabilities, dementia



Project Aims for Us

- Broaden audience to include different cultures and ages
- Learn from pilot work to develop new approaches
- Incorporate images, reminiscence and storytelling

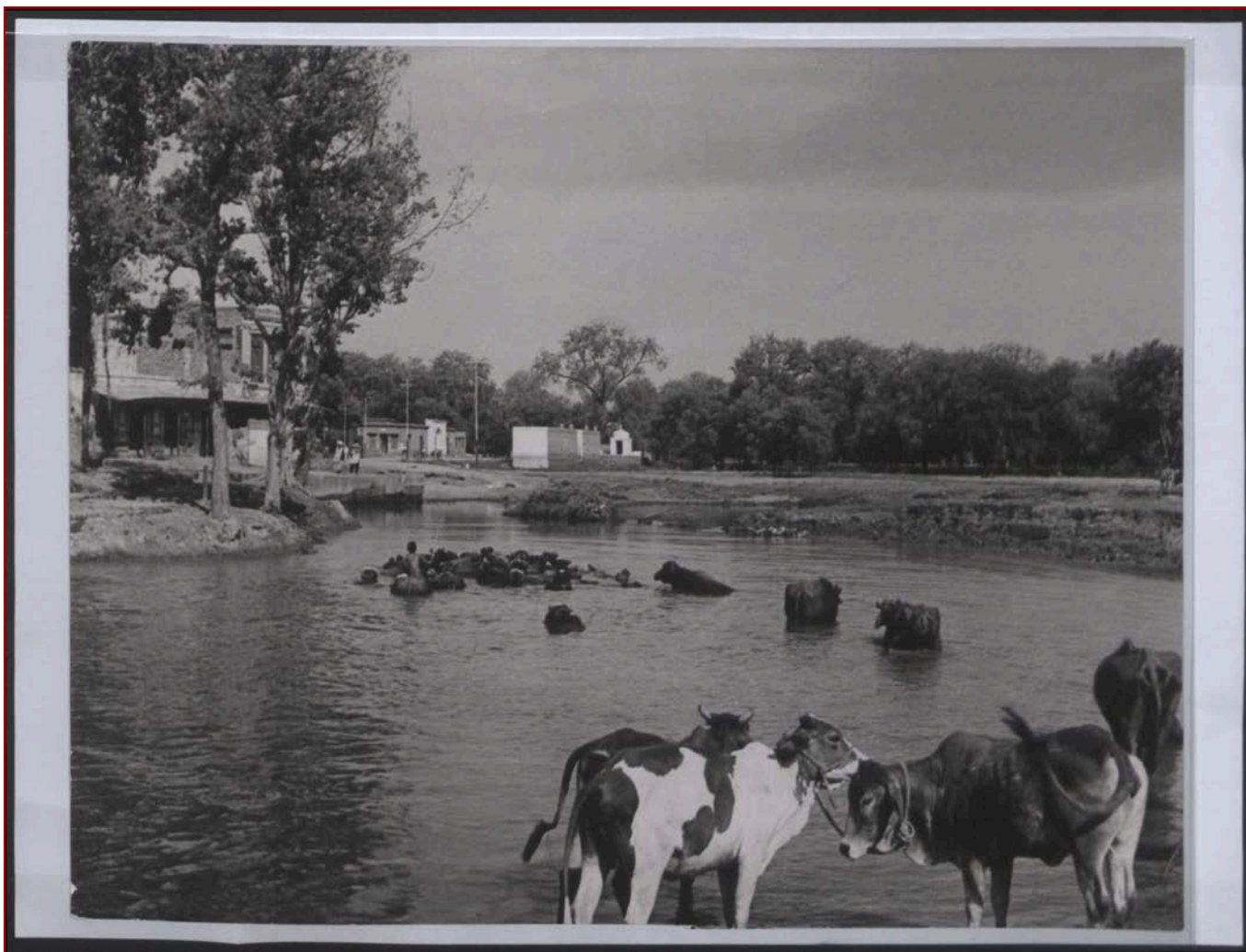


Project Aims for Participants

- Encourage greater socialisation for participants
- Overcome personal isolation
- Widen friendship circles
- Better sense of community

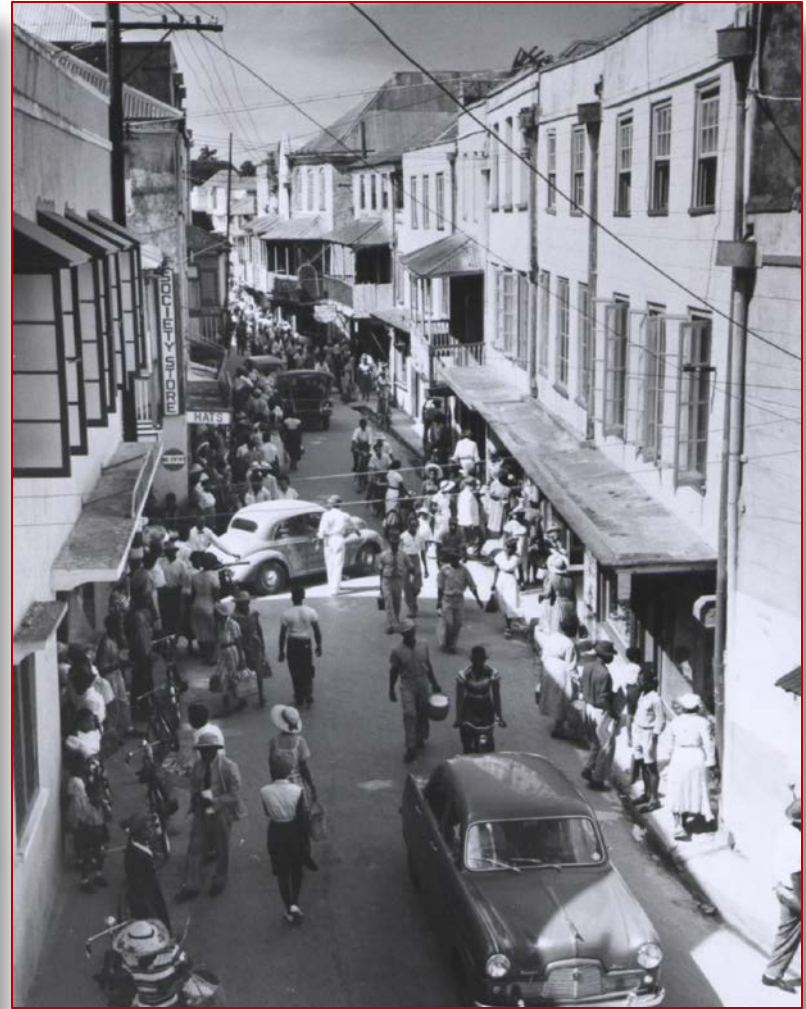


Ministry of Information Photographic Collection 1930s-1970s



Theming discussions

- Development of central theme to give focus to project
- Markets Food, Animals, Transport, Journeys, Seasons, Harvest all popular
- “Street Life” common global experience



Interviews

- 7 days of interviews
- Some group discussions
- Some 1:1 interviews
- 40-60 minutes
- Need for flexibility!
- Allow for conversations





Sharing Events and Story Telling





Back in **BATTERSEA**

Back in Battersea was a reminiscence project that worked with members at Katherine Low Settlement to recall individual and collective memories and share these memories with new generations.

These photographs were taken during the workshops in 2019, along with a selection of archive images that inspired the project.



"I really enjoyed taking part in the project..."



"I really enjoyed taking part in the project..."



"I held my husband to be's hand on the Rotor when I was fifteen."



"I held my husband to be's hand on the Rotor when I was fifteen."





A large flock of sheep is grazing in a lush green field. The sheep are scattered across the field, some facing the camera and others with their backs to it. The field is bordered by a low stone wall in the distance, and there are trees and a line of houses visible on the horizon under a grey, overcast sky. The text 'How do you fit a field of sheep in a glass case?' is overlaid in large, bold, yellow letters with a black outline.

**How do you fit a field
of sheep in a glass
case?**

Archives... an open or shut case?



 The National Archives

Find out more...



nationalarchives.gov.uk



andrew.payne@nationalarchives.gov.uk



@The_History_Man

@UKNatArchives



@TheNationalArchives